

# Indigo Fire Studio Glaze Recipe Book



Version 1.0      Jan. 2024

By: Ned Levering and Jared Hostutler

## Foreword:

Thanks for your interest in the Indigo Fire glaze catalog. This is an amalgamation of long-standing cone 6 studio glaze recipes, our own iterations of them, and our own original recipes we've created after years of collective research and testing. These recipes are by no means perfect, and are just what we've found is working best within our studio setup currently. None of these glazes have been durability tested in a laboratory.

Indigo Fire uses a range of dark and light colored clays. Not all our glazes work well on every clay body, nor when overlapped with every other glaze. Some glazes are valuable for their blending behavior, while others work best alone.

The recipes are all subject to change, as is the availability of the materials they contain. We invite you to take these recipes and test your own iterations of them. We'd like our glaze library to be open source, and we are continuously tweaking them as our understanding of glaze chemistry develops.

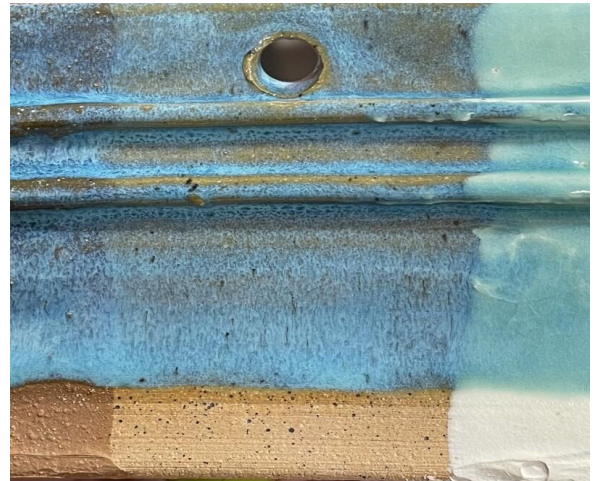
# Test Tile Image Gallery:

## Alarak Red (pg. 9)



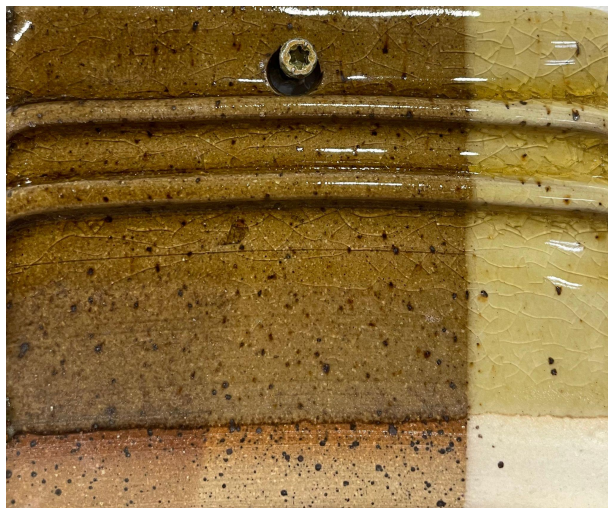
Flat, glossy, stain-based red

## Archon Blue (pg. 9)



Glossy, bright, transparent, turquoise

## Amber Crackle (pg. 9)



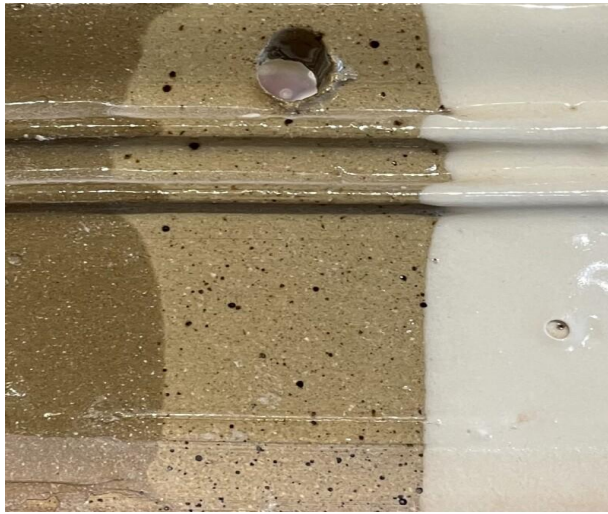
Gloss/Semi-matte transparent gold

## Assad Black (pg. 9)



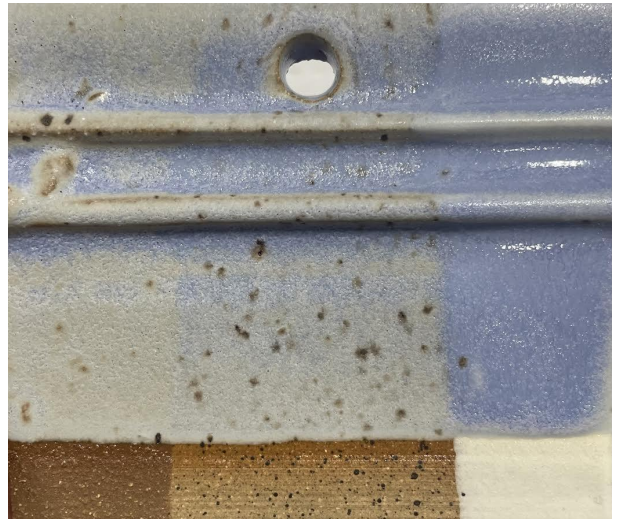
Matte black-gray-green-red hues

**Clear (pg. 10)**



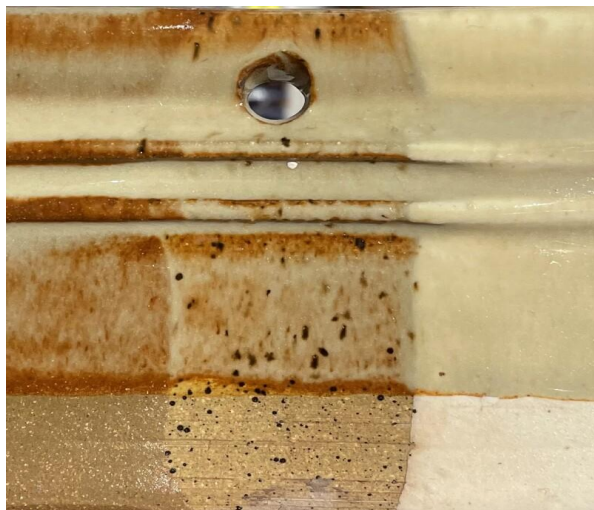
Transparent, glossy, craze free

**Dehaka Purple (pg. 10)**



Matte with gloss periwinkle pooling

**Egg (pg. 10)**



Rich, glossy iron-tin cream

**Endion Blue (pg. 10)**



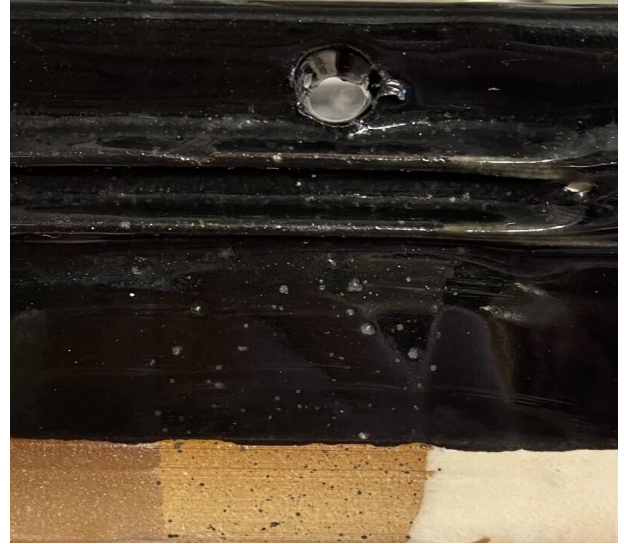
Sugary, runny, matte blue

**Glacius (pg. 10)**



Glossy royal blues

**Gloss Black (pg. 10)**



Glossy opaque black

**Karax Blonde (pg. 11)**



Glossy creams, browns, and grays

**Lalone's Crawl (pg. 11)**



Heavily textured white crawling

**Mar Sara (pg. 12)**



Dynamic iron reds, browns, and golds with crystal growth

**Neo Steel (pg. 12)**



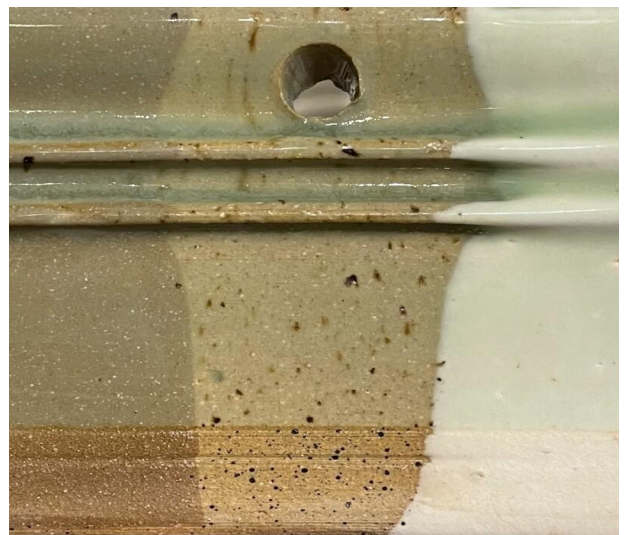
Opaque matte gray with some gloss pooling

**Nova White (pg. 12)**



Flat, opaque, glossy white

**Psionic Celadon (pg. 12)**



Classic transparent jade celadon

**Satin White (pg. 13)**



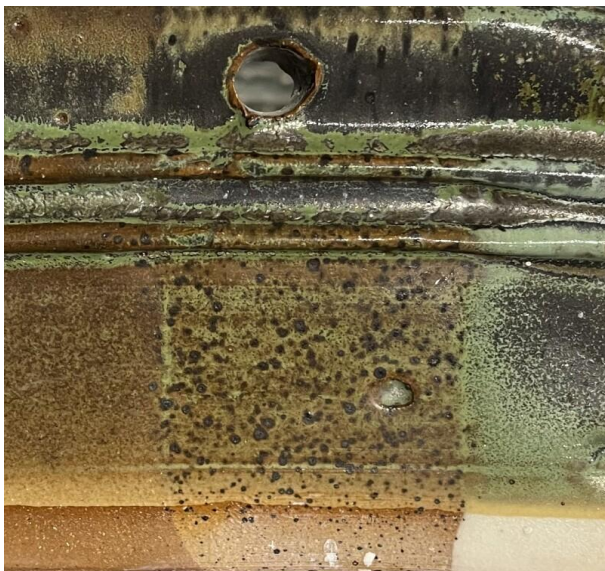
Smooth, matte white

**Thermal Yellow (pg. 13)**



Textured, matte stain-based yellow

**Umoja (pg. 13)**



Dynamic matte gray w/ gloss green

**Wanamaker (pg. 13)**



Matte green gray with turquoise pools

**Zerg (pg. 14)**



Glossy purples, pinks, and browns



## **Alarak Red**

Frit 3124.....	20%
Neph Sye.....	30%
Silica.....	25%
Whiting.....	10%
<u>EPK.....</u>	<u>15%</u>
Ultrox.....	3%
Red Stain .....	4.5%
Bentonite.....	1.5%
CMC.....	1%

## **Amber Crackle**

Frit 3134.....	16%
Neph Sye.....	73%
<u>Silica.....</u>	<u>11%</u>
Yellow Ochre.....	13%
Bentonite.....	1.5%
CMC.....	1%

## **Archon Blue**

Dolomite.....	4%
Whiting.....	8%
Zinc.....	3%
Frit 3134.....	15%
Neph Sye.....	30%
<u>Silica.....</u>	<u>40%</u>
Lithium Carb.....	2%
Copper Carb.....	2.2%
Tin.....	0.75%
Bentonite.....	2%
CMC.....	1%

## **Assad Black**

Neph Sye.....	76.8%
Silica.....	10.5%
Whiting.....	4.2%
Dolomite.....	5.3%
Zinc.....	3.2%
<u>EPK.....</u>	<u>4.7%</u>
Copper Carb.....	4.2%
Bentonite.....	1%
CMC.....	1.2%

## Clear

Neph Sye.....	10%
Frit 3249.....	15%
Silica.....	27%
Wollastonite.....	13%
EPK.....	16%
Strontium Carb.....	6%
<u>Frit 3134.....</u>	<u>13%</u>
Bentonite.....	2.25%
CMC.....	1.5%

## Egg

Whiting.....	10%
Zinc.....	6%
Frit 3124.....	44%
Custer Feldspar.....	20%
EPK.....	12%
<u>Silica.....</u>	<u>8%</u>
Tin.....	6%
Red Iron Oxide.....	3%
Bentonite.....	1.1%
CMC.....	1%

## Dehaka Purple

Neph Sye.....	41.5%
Frit 3124.....	23%
Dolomite.....	19%
EPK.....	12%
<u>Magnesium Carb.....</u>	<u>4.5%</u>
Ultrox.....	13%
Cobalt carb.....	0.5%
Bentonite.....	1.6%
CMC.....	1%

## Endion Blue

Neph Sye.....	25%
EPK.....	15%
Dolomite.....	15%
Silica.....	15%
Alumina.....	5%
Frit 3134.....	15%
<u>Wollastonite.....</u>	<u>10%</u>
Titanium Diox.....	5%
Cobalt carb.....	0.87%
Bentonite.....	1.5%
CMC.....	1%

## **Glacius**

Wollastonite.....10%  
Zinc.....2%  
Frit 3124.....30%  
Neph Sye.....20%  
EPK.....6%  
Silica.....32%  
Cobalt Carb.....1.5%  
Rutile Light.....4%  
Blue Stain (6376).....2%  
Bentonite.....1.8%  
CMC.....1.2%

## **Karax Blonde**

Custer Feldspar.....35%  
Silica.....30%  
EPK.....5%  
Frit 3134.....15%  
Zinc.....5%  
Whiting.....10%  
Titanium Diox.....5%  
Rutile Light.....4%  
Bentonite.....1.2%  
CMC.....1%

## **Gloss Black**

Neph Sye.....40%  
Silica.....25%  
Wollastonite.....10%  
Ball Clay.....10%  
Frit 3134.....15%  
Black Stain (6600).....2%  
Red Iron Oxide.....10%  
Cobalt Carb.....1%  
Bentonite.....2.2%  
CMC.....1.2%

## **Lalone's Crawl**

Neph Sye.....70%  
Ball Clay.....5%  
Magnesium Carb.....25%  
CMC.....1%

## **Mar Sara**

EPK.....5.3%  
Neph Sye.....13.5%  
Silica.....27.5%  
Wollastonite.....8%  
Dolomite.....7%  
Frit 3124.....16%  
Talc.....13.5%  
Bone Ash.....10%  
Crocus Martis.....13.5%  
Lithium Carb.....4%  
Bentonite.....0.75%  
CMC.....1.8%

## **Nova White**

EPK.....15%  
Silica.....25%  
Frit 3134.....20%  
Spodumene.....10%  
Alumina.....10%  
Wollastonite.....20%  
Ultrox.....16%  
Bentonite.....1.3%  
CMC.....1%

## **Neo Steel**

EPK.....23.5%  
Frit 3124.....7.8%  
Frit 3134.....13.7%  
Neph Sye.....19.6%  
Whiting.....16.7%  
Silica.....16.7%  
Alumina.....2%  
Rutile Light.....3%  
Ultrox.....8%  
Black Stain (6650)..3%  
Bentonite.....1%  
CMC.....1%

## **Psionic Celadon**

Dolomite.....6.3%  
Whiting.....8.9%  
Zinc.....5.4%  
Frit 3124.....31.3%  
Custer Feldspar.....17.9%  
EPK.....12.5%  
Silica.....17.9%  
Copper Carb.....0.3%  
Blue Stain (6376).....1%  
Ultrox.....2.5%  
Red Iron Oxide.....0.7%  
Bentonite.....2%  
CMC.....1%

## **Satin White**

EPK.....	28%
Frit 3124.....	23%
Neph Sye.....	20%
Whiting.....	17%
<u>Silica.....</u>	<u>13%</u>
Titanium Diox.....	3%
CMC.....	1.2%

## **Thermal Yellow**

Frit 3124.....	24%
Neph Sye.....	46%
Whiting.....	13%
Silica.....	3%
EPK.....	12%
<u>Zinc.....</u>	<u>2%</u>
Ultrox.....	5.5%
Rutile Light.....	3%
Yellow Stain (1352-Y)...	2.5%
Red Iron Oxide.....	1%
Bentonite.....	1.6%
CMC.....	1%

## **Umoja**

Neph Sye.....	42%
Silica.....	15%
Wollastonite.....	10%
EPK.....	13%
Frit 3124.....	7.5%
Lithium Carb.....	4%
<u>Soda Ash.....</u>	<u>8.5%</u>
Titanium Diox.....	7.5%
Copper Carb.....	3.7%
CMC.....	1%

## **Wanamaker**

Dolomite.....	21%
Spodumene.....	12%
Neph Sye.....	53%
<u>Ball Clay.....</u>	<u>14%</u>
Copper Carb.....	1%
Zinc.....	5%
Ultrox.....	13%
Bentonite.....	1.3%

## **Zerg**

Whiting.....	8.8%
Zinc.....	6.6%
Frit 3124.....	38.8%
Custer Feldspar.....	17.6%
EPK.....	10.5%
<u>Silica.....</u>	<u>17.7%</u>
Rutile Light.....	4.1%
Red Iron Oxide.....	1.8%
Red Stain.....	5.3%
Cobalt Carb.....	0.2%
Bentonite.....	1.6%
CMC.....	1.2%